

Pendant EdingCNC

DEEL 1

Close all program's. Also EdingCNC.

Connect USB and wait 10 seconds.

Download:

This is the file with parameters. Save this file somewhere and remember where.

https://www.hardware-cnc.nl/download/edingcnc/EdingCNC_MPG.zip

Download:

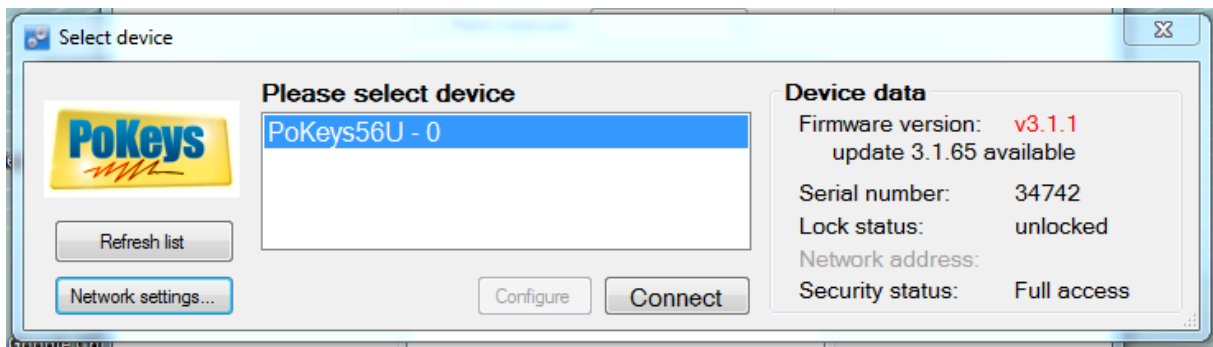
https://www.hardware-cnc.nl/download/poscope/PoKeys_Setup_3165.exe



Run this program and use default settings during installation.

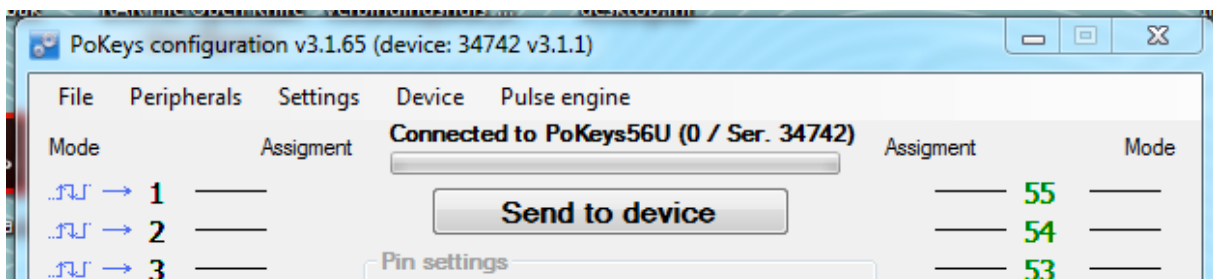
During installation you can skip updating for later.

Choose "Device" and click "Connect":



Goto "File" choose "Open" . Find the saved file with parameters **EdingCNC_MPG.pkc** Open it.

Send info to "Device". Click on "**Send to device**"

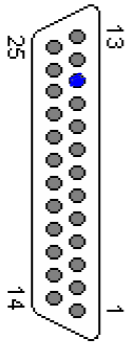


Close PoKeys.

DEEL 2

Connect the Sub-D on the CPU5A3/4/4E EdingCNC board.

The blue wiring coming out of the Sub-D has to be connected to pin 11 of the 25 pol. Sub-D.



13: IN HOME1
12: IN HOME2
11: IN ESTOP
10: IN HOME3
9: OUT STEP4
8: OUT DIR4
7: OUT STEP3
6: OUT DIR3
5: OUT STEP2
4: OUT DIR2
3: OUT STEP1
2: OUT DIR1
1: OUT TOOL

Ready to use..

Points of interest:

- The pendant has got a push button on the side for safety. During operation this pushbutton has to be pushed in .
- After changing the stepsize, for safety, you have to release momentarily the push button on the side.

FAQ:

- FEED is changing when i rotate the rotary encoder. Put FeedOverrideInput on "UI" and "Save".

